



**BEAVER  
MOUNTAIN**

Log & Cedar Homes

*Timeless Beauty. Naturally Home.*

*Naturally*  
**HOME**

1740 County Highway 48 Deposit, NY 13754 • 1-800-233-2770 • [www.BeaverMtn.com](http://www.BeaverMtn.com)



*Their private*  
**FIELD of DREAMS**

“If you build it they will come...”

When Karen talks about her new home in Western Maryland, one of the first things that she will tell you is, “Never, in a million years, did I expect to build a log home.” When Karen and George, a retired general from the US military, purchased the land that they wanted to put their vacation home on, the surroundings just called for a log cabin. Karen said, “The woods were like a virgin forest and only a log cabin belonged on the site.” She did ask for a soft patina look on the logs to help the new home blend into its surroundings. She had definite plans from the start and she found a contractor to help her make it happen.

Karen has a degree in Merchandising from Penn State and has worked as an interior decorator for the last ten years, so she was in charge of many of the design choices for the home. She succeeded in creating a home that has both stature and style. She cleverly arranged the layout to enable them to have the best of both worlds with a little forethought. If they are alone, all of the space that they want to use is on one floor and they don't even need to venture through separate areas of the house. If their three daughters and eight grandchildren are there, the home comfortably accommodates the entire family. The couple entertains frequently, so the kitchen boasts a 6 burner Wolf Range and the dining room has a table that Karen had made for the dining area. Equipped with two leaves, the table expands. If the group is really large, she brings in a made-to-order, game table that is a match in



width and style for the dining table and she can comfortably seat 18.

The rest of the home has little features that display similar planning. Rather than put in a 'Jack and Jill' style bath between two guest bedrooms, Karen had vanities made from reclaimed barn wood installed in the guest rooms. She added a sink which enables guests to have their shower and retreat to their rooms to finish preparing for the day. She brought that idea back from her time traveling around Europe. Her master bath has some additional features. The shower and tub sit between adjoining areas that each holds a toilet and a large vanity and dressing area. "We each have our own space," Karen said.



The great room offers a wonderful view of the lake and its ever changing vista. The wall in the great room facing the lake is made almost entirely of glass. The lake wears many faces and it is one of the first things that people glance at as they enter the room. There is a casual elegance to the home that displays care and planning. The



mix of styles is seen in the glass topped sofa table with deer antlers for legs. Oriental rugs grace the floors and overstuffed sofas and chairs beckon the visitor. Karen found the mantle for the fireplace in Pennsylvania. Purchased from a friend of George's, an elk head is displayed on another wall. Karen appreciates Amish craftsmanship. It is on display in many of the custom wood pieces in the home.

They hired Rob Leuba from Concepts Associates to build their home. Rob and his partner, Pete Brosnihan, have owned and operated Concept Associates Builders, Inc. for over 27 years. Rob recommended Beaver Mountain Custom Log and Cedar Homes. Although Rob had never dealt with Beaver Mountain, he had already done a lot of research because he wanted a supplier located in the East. A lot of log home suppliers are located in the western US and turn around time on support, products and problem solving is consequentially slow. Located in Maryland, Concept Associates Builders Inc. was looking for an eastern based company with a variety of options.

Rob had visited the Beaver Mountain website and he could see that they did not skimp on quality or put brackets on the logs like some log home makers do. He didn't need a mill tour or a lot of hype to see the quality of the company and its product. He looked at the variety of packages offered, as well as the number of designs and he was convinced. He was also pleased to see that they offered a hybrid service. The ability to side a home with logs was one of Beaver Mountain's options. For Rob it was a question of distance, time, and service. Beaver Mountain was 6 hours





might best describe the aura of the home. “Come in and stay awhile”, the house beckons.

Karen and George love the house and frequently spend time there. Karen has all wood on the interior side of the exterior walls, but she had some interior walls done in drywall and painted. She feels that it accentuates the wood to have color contrasts. Her décor choices for convenience and minimum fuss make it the perfect retreat from the more formal Washington



**About the Builder**  
 Rob Leuba • Concept Associates  
 301-746-8870 • [www.conceptassociates.com](http://www.conceptassociates.com)

away from Rob and located on the Delaware River near major highways. In business for over 29 years, Beaver Mountain had a well deserved reputation for customer satisfaction. Rob chose Beaver Mountain.

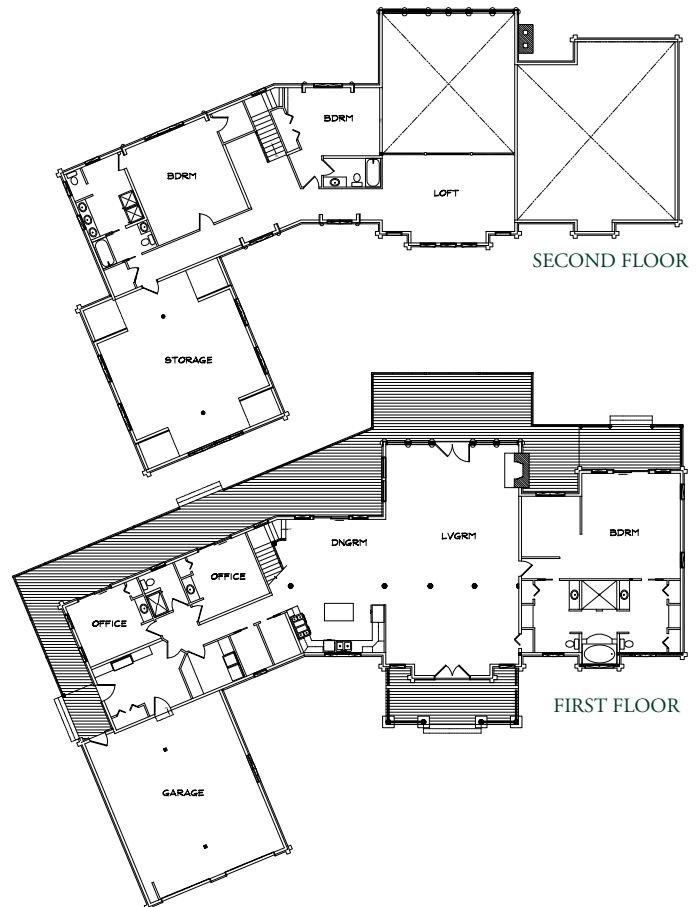
George made it clear that Karen was in charge of their home building. Rob recalls George telling him something like, “She has followed me all over the world for over forty years and this is her call.” “Karen knew what she wanted, but was open to some modifications, so it was easy to work with her,” Rob said.

When the foundation was being laid, the general visited on a cold, wet day in November and personally introduced himself to every worker at the site and shook their hand. He didn’t care if you were wet or dirty or the foreman or the go-for guy, he treated everyone the same. Rob and his crew were very impressed and tried hard to please the couple and build a home that was everything that the couple wanted. Rob thinks that they succeeded. If you ask Rob about the powder room, he will probably grin and explain the use of native woods in the flooring and the way that they put together a unique floor.

The home sits on the point of the lake and if you approach after dark, the house is ablaze with welcoming light; if you approach during daylight hours, the welcome is more subtle, but a feeling of arriving

## HOME DETAILS

3 Bedroom • 4.5 Bathroom • 5551 sq. ft.



lifestyle that the couple is very involved in. Karen chose pieces for the home with care to ensure a traditional and sophisticated look that is displayed in her use of color and textures to bring the warmth of the countryside into the home. In a sense the home also represents Karen's Field of Dreams. She told George, "If we build it, they will come." She was referring to her children and grandchildren and she has been proven right. They both derive a great deal of pleasure from watching their grandchildren interact and the cousins are getting to know one another better. It's exactly



what Karen pictured when she and George decided to build a vacation home. Furnished with care and charm, the home is a tribute to craftsmanship and style. Worries and stress retreat when they are here. As Karen put it, "There is nothing better than a cup of coffee on the deck in the absolute quiet before the day begins." Owner, contractor and supplier have joined forces to make an idea come to life and life is good at Deep Creek Lake.

Your dream home  
is right around the corner.

# Let Beaver Mountain take you there.



## EXPLORE ONLINE

Visit Beaver Mountain online:

- Take a virtual tour of a Beaver Mountain log home.
- See featured custom homes in our photo gallery.
- Browse log, timber and hybrid homes.
- Read Beaver Mountain's blog and subscribe to our e-newsletter.

## TOUR

Take the first step - make an appointment with a Beaver Mountain log home adviser. Plan a visit to our design center and model homes, centrally located in the southwestern Catskills, or meet with your personal adviser at your home site.

## START DREAMING

If you can dream it, Beaver Mountain can make it happen. With the best people in the industry at work for you, you can relax and enjoy watching your dream home become a reality.

Find out more about our unique approach to custom-built homes. Call today to talk with a Beaver Mountain log home adviser.

[www.beavermtn.com](http://www.beavermtn.com)

800.233.2770